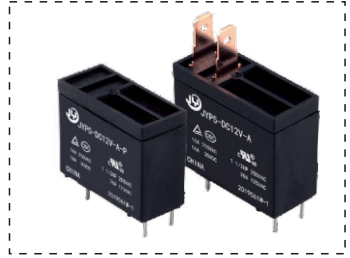


Power Relay Series 功率继电器系列 -- JYP5

FEATURES特点

- 16A contact switching capability
16A 触点切换能力
- Suitable for microwave oven
适用于微波炉等产品
- 5KV dielectric strength between coil and contact
触点与线圈间介质耐压 5KV
- Outline dimensions 29.0 × 12.6 × 24.2mm
外形尺寸 29.0 × 12.6 × 24.2mm



CONTACT PARAMETERS触点参数

Contact Form触点形式	A-1组常开
Rating Load (Resistive) 额定负载 (阻性)	16A 250VAC/30VDC
Max. Switching Current最大切换电流	16A
Max. Switching Voltage最大切换电压	277VAC/30VDC
Max. Switching Power最大切换功率	4000VA/480W

CHARACTERISTICS性能参数

Contact Materials触点材料	Ag Alloy银合金		
Contact Resistance接触电阻	100mΩ Max		
Operate Time吸合时间	20ms. Max		
Release Time释放时间	10ms. Max		
Insulation Resistance绝缘电阻	1000MΩ Min. (DC500V)		
Initial Dielectric Strength介质耐压	between open contacts: 触点与触点间:	AC1,000V,50/60Hz 1Min	
	between contacts and coil: 触点与线圈间:	AC5,000V,50/60Hz 1Min	
Vibration Resistance抗振动	Damage limits: 耐久:	10~55Hz Double Amplitude双振幅	1.5mm
	Malfunction: 误动作:	10~55Hz Double Amplitude双振幅	1.5mm
Shock Resistance抗冲击	Damage limits: 耐久:	10G Min	
	Malfunction: 误动作:	100G Min	
Life寿命	Mechanical Life (10800 per hour) 机械寿命 (每小时10800次)	1 × 10 ⁶	
	Electrical Life (1800 per hour) 电气寿命 (每小时1800次)	1 × 10 ⁵	
Ambient Temperature环境温度	-40℃ ~ +105℃ (No condensation) (不冷凝)		
Unit Weight单位重量	约Approx. 15.0g		

**COIL RATINGS (at 23°C) 线圈参数 (在 23°C)**

Coil Nominal Voltage 额定电压 (VDC)	Nominal Current 额定电流 ±10%(mA)	Coil Resistance 线圈电阻 ±10% (Ω)	Max. Continuous Voltage 最大连续外加电压	Pick-Up Voltage 吸合电压 (Max)	Drop-Out Voltage 释放电压 (Min)	Rated power 额定功率
5	106.38	47	Coil Nominal Voltage 130% 额定电压的 130	Coil Nominal Voltage 75% 额定电压的 75%	Coil Nominal Voltage 10% 额定电压的 10%	About 0.54W 约0.54 W
6	88.24	68				
9	58.07	155				
12	44.45	270				
18	29.03	620				
24	21.82	1100				
48	10.91	4400				

ORDERING INFORMATION 订货标记

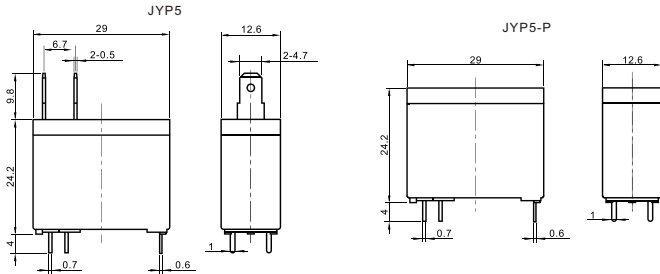
JYP5-DC12V-A-P-(XXX) 1 2 3 4 5	
<p>1. Model Number 基本型号 JYP5</p> <p>2. Coil Voltage 线圈规格 (VDC): DC5V, DC6V, DC9V, DC12V, DC18V, DC24V, DC24V, DC48V</p> <p>3. Contact form: A-1 Form A 触点形式: A-1组常开</p>	<p>4. Termination: Nil: PCB+QC P: PCB 引出端形式: 无: 印刷板+快连接式 P: 印刷板式</p> <p>5. Customer Special Code: XXX-Customer Special Requirements No - Standard Type 客户特性号: XXX-客户特殊要求, 无-标准型</p>

SAFETY STANDARD 安规认证

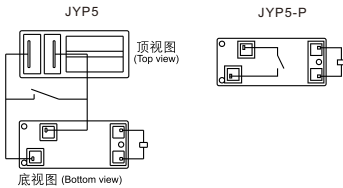
AuthType Basic 认证类别	UL/C_UL	TUV	CQC
Authentication Load 认证负载	16A 250VAC/30VDC 20A 125VAC 1-1/2HP 250VAC	16A 250VAC/30VDC	16A 250VAC/30VDC 20A 125VAC

OUTLINE DIMENSIONS (UNIT:mm)外形尺寸 (单位: mm)

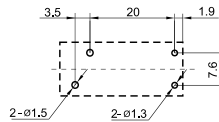
外形尺寸 OUTLINE DIMENSIONS



接线图 WIRING DIAGRAM (底视 Bottom View)



安装孔尺寸 PCB LAYOUT (底视 Bottom View)



Undimensioned tolerance: <1mm: ±0.2mm 1~5mm: ±0.3mm >5mm: ±0.4mm
未标注尺寸公差: <1mm: ±0.2mm 1~5mm: ±0.3mm >5mm: ±0.4mm

Note: 1. The size of the lead foot is pre welding dimension. 注: 1、引出脚尺寸为预焊前尺寸
2. installation hole size tolerance: + 0.1mm 2、安装孔尺寸公差: ±0.1mm

TYPICAL USE典型用途

- Household equipment, Office equipment, Audio, Smart home, Smart socket, Etc..
- 家用设备, 办公设备, 音响, 智能家居, 智能插座等

PERFORMANCE CHART性能曲线图

